

What can I do with a degree from G&A?

G&A graduates are equipped to move in many career directions, often combining their knowledge of human-environment relationships. While many students continue on to graduate work, others head straight into the workforce in a variety of careers.



Job type	Average salary:
Museum Curator	\$42,310
Interpreter/translator	\$43,300
Anthropologist	\$54,230
Archaeologist	\$57,000
Forensic specialist	\$51,570
High school teacher	\$53,230
Surveyor	\$56,000
Editor	\$62,000
Medical researcher	\$76,700
Economists	\$91,000

Job type Average salary:

Real Estate Appraiser	\$48,500
Forester	\$54,420
Cartographer	\$54,510
College Professor	\$62,050
Surveyor	\$64,820
Urban Planner	\$67,090
Geographer	\$72,800
Hydrologist	\$75,690
Geoscientist	\$82,500
Environmental Engineer	\$83,340
Health Services Manager	\$84,270



Financial Aid

LSU's Student Financial Aid office provides affordability and access for all students to obtain their educational goals. LSU financial aid is dedicated to helping students finance their education through federal, state, and institutional dollars.

The office is staffed with professionals to provide excellent service to you. They are available Monday - Friday from 8:00 a.m. to 4:30 p.m. Please feel free to visit financial aid in Pleasant Hall. You may also contact financial aid via email by writing to financialaid@lsu.edu or by phone at 225-578-3103.

Department Mission:

- to serve the region, which has a unique range of cultural diversity and a rich historic and prehistoric heritage, and in which its residents have justifiably great pride;
- to provide a comprehensive and high quality curricular program for undergraduate majors and graduate students at master's and doctoral levels;
- to conduct seminal and sustained research and scholarship befitting a department of premier academic rank;
- to provide high quality general education courses for non-majors;
- to provide service at the highest levels in our professions as well as to the University, community, region, and state; and
- in our role as the University's principal department for exploring the relations of nature and culture, to articulate interdisciplinary discourse, scholarship, and programmatic development among the humanities and the social and physical sciences.

G&A

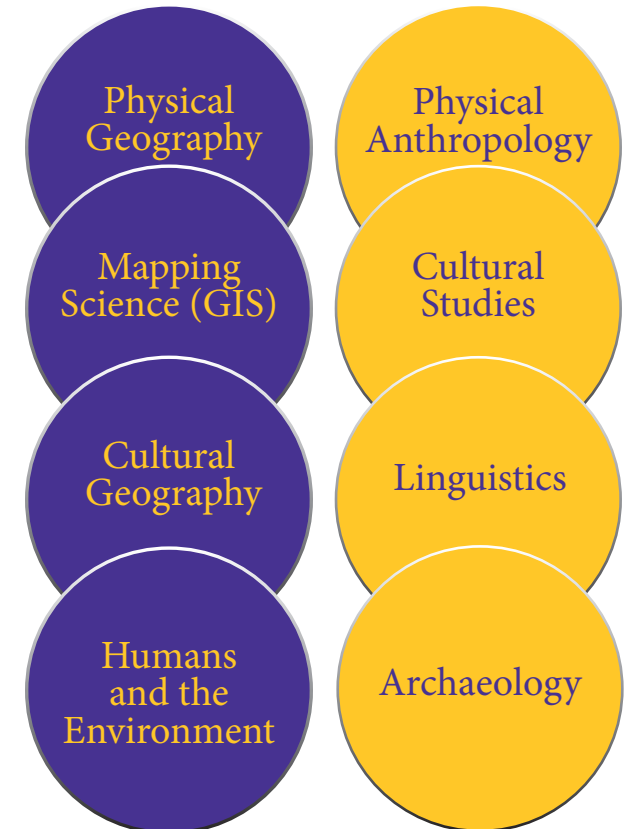
B.A. Undergraduate Advisor: Andrew Sluyter
(225) 578-5942 / asluyter@lsu.edu

B.S. Undergraduate Advisor: Lei Wang
(225) 578-5942 / leiwang@lsu.edu

www.ga.lsu.edu

Department of Geography & Anthropology
Room 227

Howe-Russell-Kniffen Geoscience Complex
phone: 225-578-5942
email: gachair@lsu.edu



Major requirements

GEOGRAPHY

Students majoring in geography may earn either the Bachelor of Arts (B.A.) or the Bachelor of Science (B.S.) degree. Students interested in mapping sciences or physical geography normally enter the B.S. program, and those interested in human geography enter the B.A. program.

Candidates for the bachelors degree with a major in geography must complete a curriculum of 30 semester hours for the B.A. and 36 semester hours for the B.S., consisting of nine hours of core courses.

Geography:
40 Undergrads
1:1 female-male-ratio
17% minority students

REQUIRED COURSES:

- GEOG 1001: Human Geography (Europe and Americas)
- GEOG 1003: Human Geography (Africa and Asia)
- GEOG 2050: Physical Geography (The Atmosphere)
- GEOG 2051: Physical Geography (Land, Water and Earth)
- GEOG 2055: Map Reading

ANTHROPOLOGY

A Bachelor of Arts (B.A.) is offered in anthropology. Because it is a broad study of mankind, students majoring in anthropology are urged to take courses in the sciences, the social sciences, and the humanities.

A minimum of 25 semester hours in anthropology is required. Courses in archaeology, cultural anthropology, folklore, physical anthropology, and anthropological linguistics are available.

REQUIRED COURSES:

- ANTH 1001: Physical Anthropology and Prehistory
- ANTH 1003: Cultural and Social Anthropology

Three out of the following four:

- ANTH 2015: Archaeology
- ANTH 2051: World Ethnography
- ANTH 3060: Linguistics
- ANTH 4040: Physical Anthropology

Anthropology:
134 Undergrads
3:2 female-male ratio
18% minority students

Geography

Geographers study Earth's natural environment, society, and Earth-society relationships. Students enrolled in geography focus their studies into one of four focus areas:

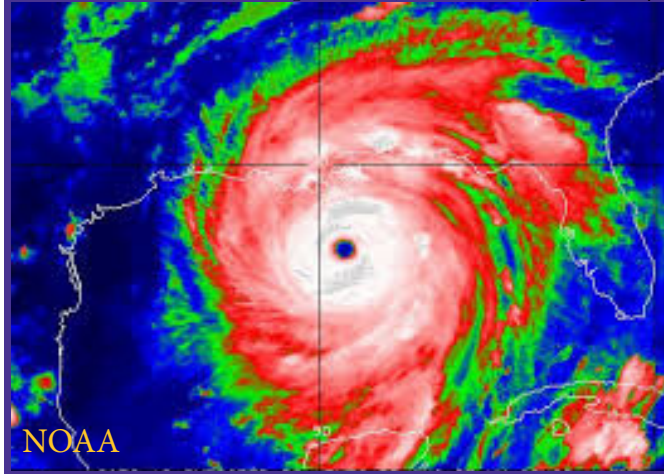
- **Physical geography** - the study of patterns of climates, land forms, vegetation, soils, and water.
- **Mapping science** - Geographic Information Systems (GIS), Remote Sensing, Global Positioning Systems (GPS), and online mapping such as Google Earth.
- **Cultural geography** - the study of the spatial aspects of human existence and society.
- **Humans and the environment** - the study of the relationships between the Earth and society and how they shape one another.

Anthropology

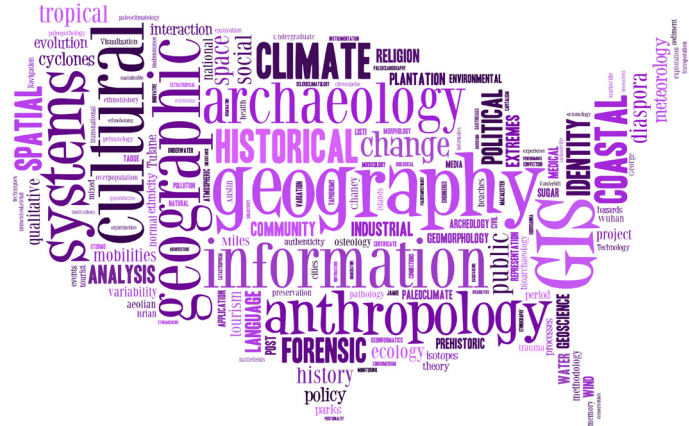
Anthropologists study humankind, past and present, pulling in expertise in fields ranging from biology to sociology. Students enrolled in anthropology focus their studies into one of four focus areas:

- **Physical Anthropology** - includes forensics, or the study of human skeletons and other remains.
- **Cultural Studies** - the study of the cultural aspects of human existence and society.
- **Archaeology** - the study of human existence and society in ancient times.
- **Linguistics** - the study of languages and their relationships to human existence and society.

REGIONAL FOCUS: Many courses examine issues specific to Louisiana and the American South, like impacts from hurricane Katrina, rising sea level, and a history of poverty.



Student life



The LSU Geography and Anthropology Undergraduate Society (GAUS) meets bimonthly for social gatherings, guest speaker presentations and career development. GAUS participates in department parties, including the Southdowns Mardi Gras parade, and graduate field trips across Louisiana.



Above: New and returning students kayak through marshlands on Aug. 31, 2013 in Cocodrie, La. Undergraduate students can participate in graduate student events, including field trips.

Faculty

Our faculty represent the elite of their field – leaders in climate research, coastal morphology, archaeology and more.

The department has consistently been ranked as a top doctoral geography department in the country. Faculty have made distinguished contributions at all levels of academic life. Eleven faculty members have held titled professorships including four Boyd Professors—LSU's most prestigious designation.